

 **MAGMAFLO**
SYSTEM 3

AVAILABLE IN NEW PUMPS AND RETROFITTED

MAGMAFLO SYSTEM 3

The Magmaflo design just got better with System 3!

AVAILABLE AS NEW PUMP OR CAN BE RETROFITTED,
ALL SIZES AND VARIED MATERIAL CHOICES.

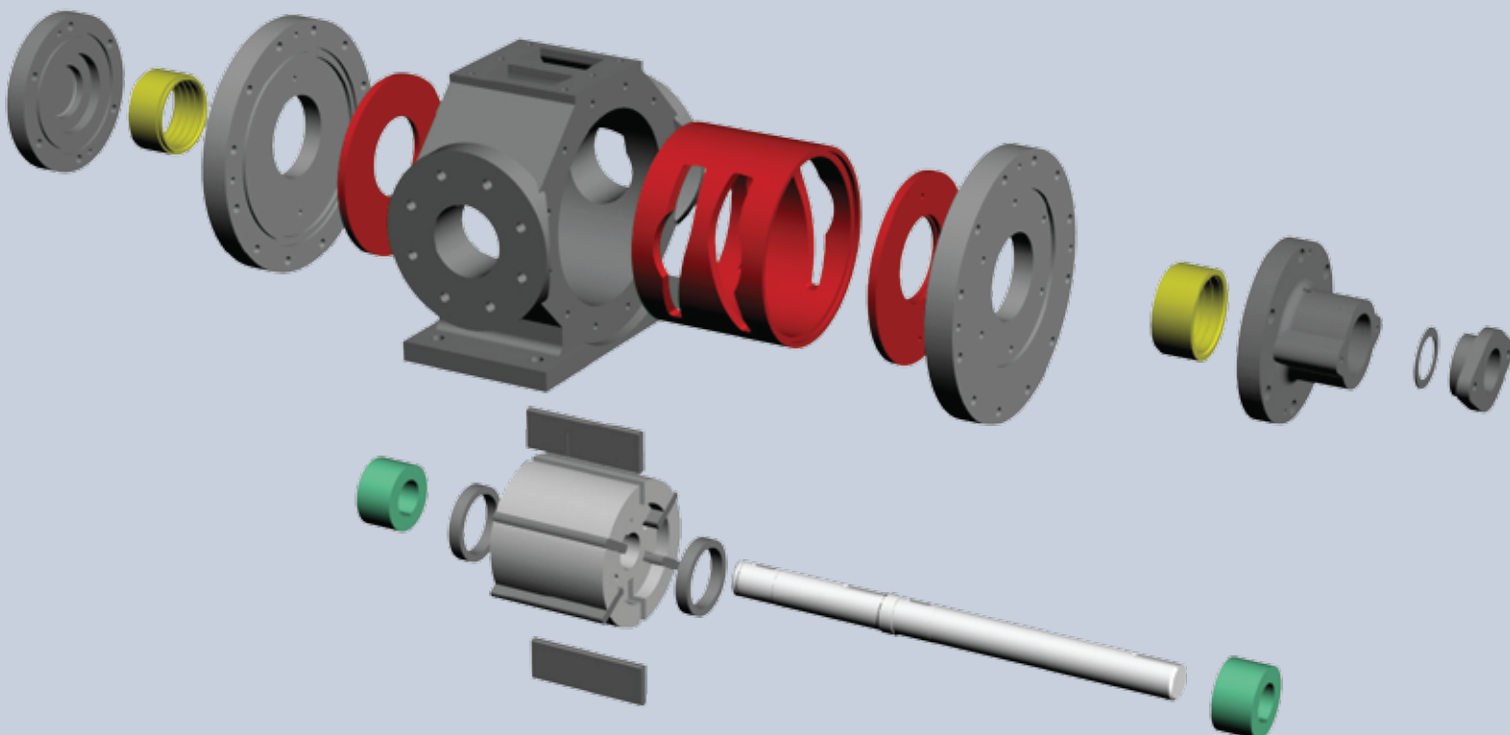
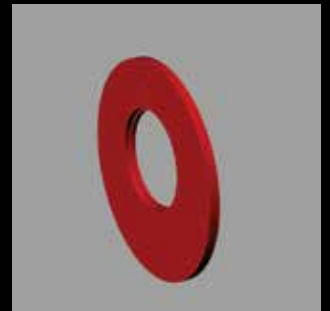
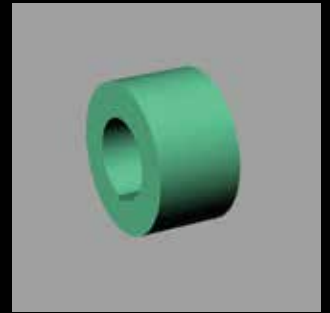
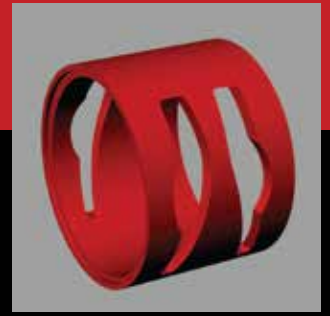
Long Lasting Components • Ease Of Maintenance • Low Cost Of Ownership

The value of System 3 includes:

- Inexpensive reconditioning
- Speed and ease of reconditioning
- Replacement of selected components
- Factory or local replacement
- Precision manufactured stock components

Features of System 3 include:

- Casing Liner - choice of standard / hardened materials
- Side Cover Wear Plates - various materials to suit applications
- Hub Bearings - increased journal areas equal increased life.
- equal higher loads
- Choice of materials including hardened options - opportunity to select optimum materials for greatest lifespan



	KEY FEATURES	MATERIAL OPTIONS
Casing Liner	<ul style="list-style-type: none"> • Benefit of Ease of Replacement • Selection of Suitable Material 	<ul style="list-style-type: none"> • SG Iron • Nitride Hardening • Stainless Steel
Side Cover Wear Plates	<ul style="list-style-type: none"> • Benefit of Ease of Replacement • Selection of Suitable Material 	<ul style="list-style-type: none"> • RockLast Hi-Wear Steel • SG Iron Standard / Nitride Treatment • Bronze • Synthetic - Vesconite / GF PTFE / ACETAL / Carbon
Hubs	<ul style="list-style-type: none"> • The greater load surface ensures HIGHER LOADS AND LONGER LIFE • Wear is targeted in the hub area rather than the shaft, therefore making the shaft reusable. • Higher pressures - with added strength, the unit can perform at higher pressures. 	<ul style="list-style-type: none"> • Nitride EN 19 T Treatment • Stellite Coated • Stainless Steel
Hub Bushes	<ul style="list-style-type: none"> • Selection of suitable material 	<ul style="list-style-type: none"> • EN19 and/or nitrided • Carbon • Vesconite • Stainless Steel
Shaft Sealing	<ul style="list-style-type: none"> • Options include gland packed or mechanical seal 	



POSITIVE DISPLACEMENT ROTARY PUMPS

Magmaflo sliding vane pumps are designed for use in many arduous industrial applications: moving with ease, liquids, which vary in viscosity, from free-flowing fuel and light oils through to heavy duty bitumen and tars.

In one hour the impressive Magmaflo can move up to 180m³ of liquid at viscosities from 1.00CS - 44,000CS (200,000)SSU at temperatures reaching 180°C.

High output at slow speeds coupled with a smooth pumping action eliminates damage to the pumped product. This also means that the Magmaflo has greater reliability and pump life - a saving in costs with minimal maintenance and down time. Tailor-made solutions to the most complex pumping problems are easy for the Magmaflo which allow for maximum flexibility in combining pump elements, and a wide choice of materials.

HOW IT WORKS

The Magmaflo is a self priming positive displacement pump of simple rotary sliding vane design. As the rotor revolves, a fixed volume of fluid is discharged. This is moved from the suction port to the discharge port by the vanes which slide within the rotor against the pumping chamber wall.

Three forces ensure close contact between the vanes and the pumping chamber wall:

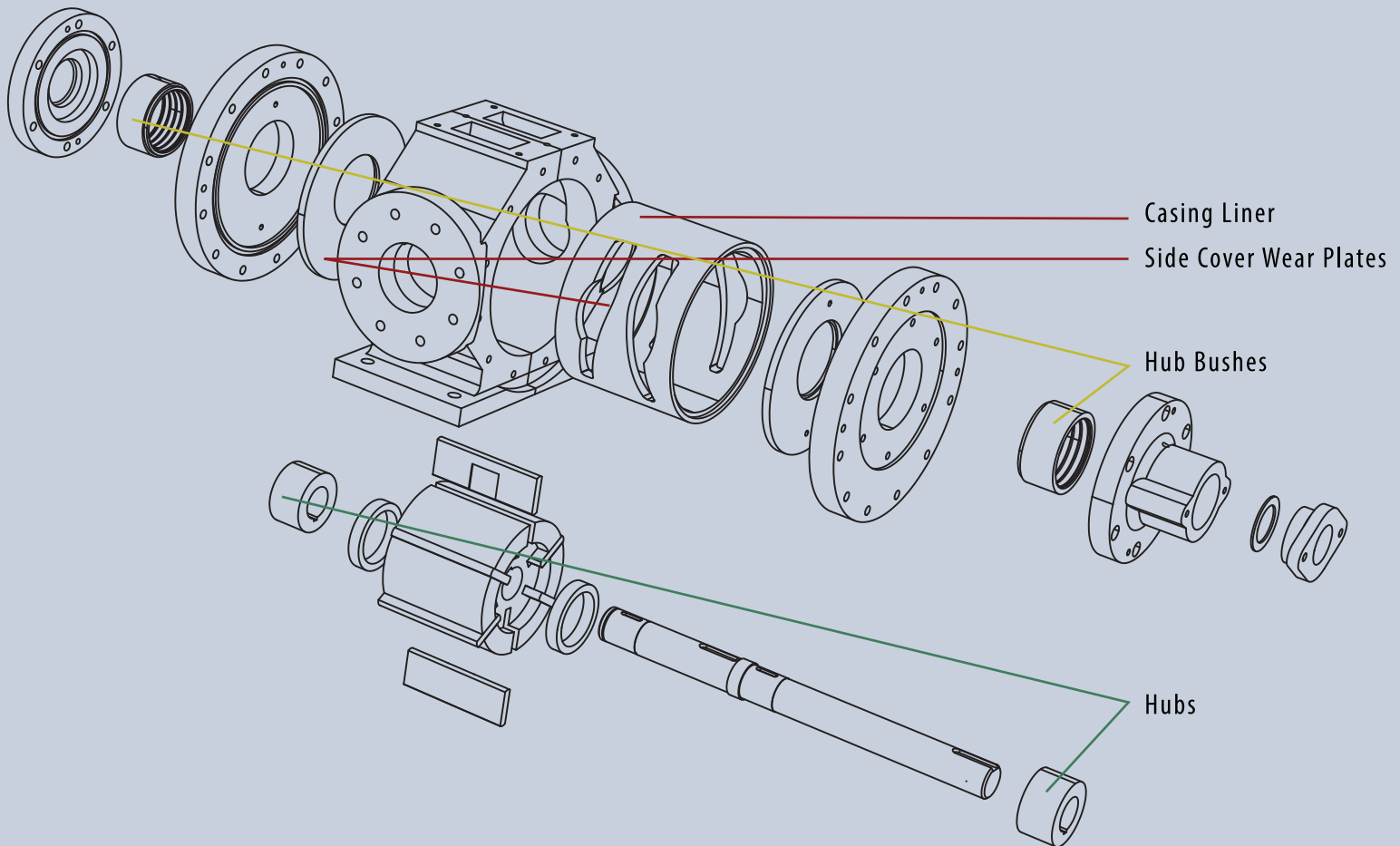
1. Pump rotation produces centrifugal force.
2. Idler rings located within the rotor.
3. Hydraulic pressure from behind the vanes.

SLIDING VANES COST LESS TO MAINTAIN

The Magmaflo pump is designed to allow for easy maintenance without special tools and in most cases without even having to disconnect the pump from the piping system. To change vanes, simply remove the outer head and replace critically worn vanes as and when necessary. Routine servicing is just as easy, keeping downtime and maintenance costs to a minimum.

SELF-ADJUSTING VANES SUSTAIN EFFICIENCY

The Magmaflo pump maintains high volumetric efficiency throughout service. Because the rotor vanes are self-adjusting, internal pump slip is reduced to a minimum. Suction and discharge capacity is unimpaired even after arduous service. Compensation for wear on the vanes is effected as the vanes are able to slide outward within their slots thereby maintaining the same fine clearance against the pumping chamber.



**LS LAKESIDE
EQUIPMENT**

MANUFACTURED BY LAKESIDE EQUIPMENT (PTY) LTD.
REG NO: 82/03375/07

8 Monaco Place, Westmead, 3605, South Africa
Tel: +27 (0) 31 700 2137 / 60 / 39 / 72
E-mail: lakesideequipment@mweb.co.za
Website: <http://www.lakesideequipment.com>